

Stretchable Strain Sensor

Features

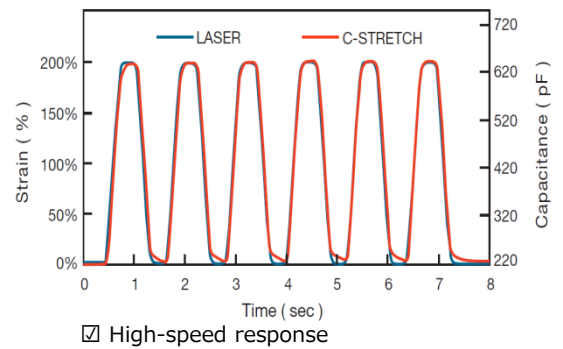
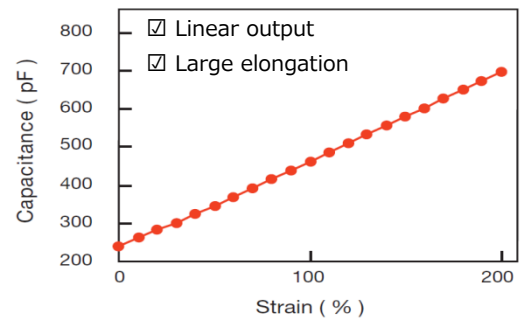
- ▶ C-STRETCH® is a sensor for detecting elongation.
- ▶ C-STRETCH® sensor is very soft, with excellent trackability to detect even small force elongation.
- ▶ Low hysteresis enables measurements with high repeatability, with excellent linearity from low strain to large.

Background

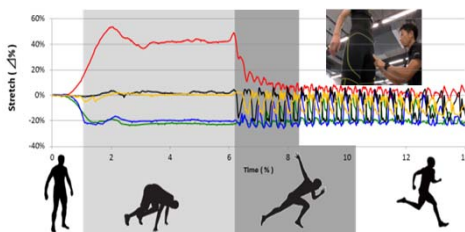
- ▶ C-STRETCH® is a new, highly resilient sensor to detect the magnitude of elongation. It is made using an elastomeric compound design, incorporating filler dispersion and film process technology.

Applications

- ▶ Motion measurement for sports, physical rehabilitation.
- ▶ Measurement of biological signals for healthcare, medical.



• Measurement tool



Evaluation of sportswear

• Swallowing Monitor



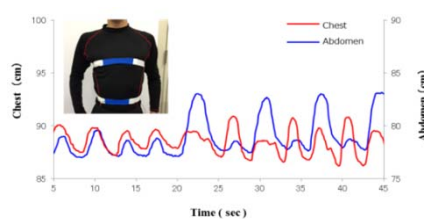
Measurement of chewing and swallowing

• Interface



Remote control of hand robot

• Respiration monitor



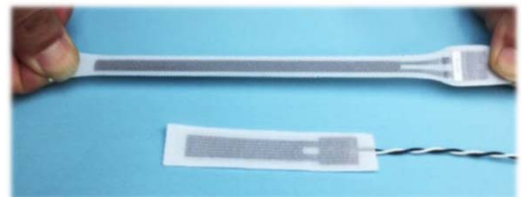
Measurement of abdominal and ribcage breathing motion

C-STRETCH® Kit BT01



C-STRETCH® BT01 Specification

Sensor element	Detecting size	W0.39×L1.97 (in) W0.39×L1.18 (in)	
	Extension range	0~100% #1 axis extension	
Transmitter	Number of Channels	4ch	
	Sampling	Bluetooth mode 10Hz Analog mode 100Hz	
	Battery type	AAA size dry battery × 1	
	Operation time	Approximately 10 hours	
	Output	Bluetooth mode :	approximately 10m
		Analog mode :	0~3V
Dimension	W2.95×D1.97×H1.18 (in)		
Software	Function	Display waveform/Save to CSV	
	OS	Windows 7 / 8.1 / 10	
Accessories	Input cable	0.08in × 4pairs/set	
	Output cable	0.08in※Only use in analog mode	



※Connecting image

Contact

BANDO CHEMICAL INDUSTRIES, LTD. New Business Promotion Center

☎ Head Office 81-78-304-2024 Tokyo Branch Office 81-3-6369-2102

✉ c_stretch@bandogrp.com